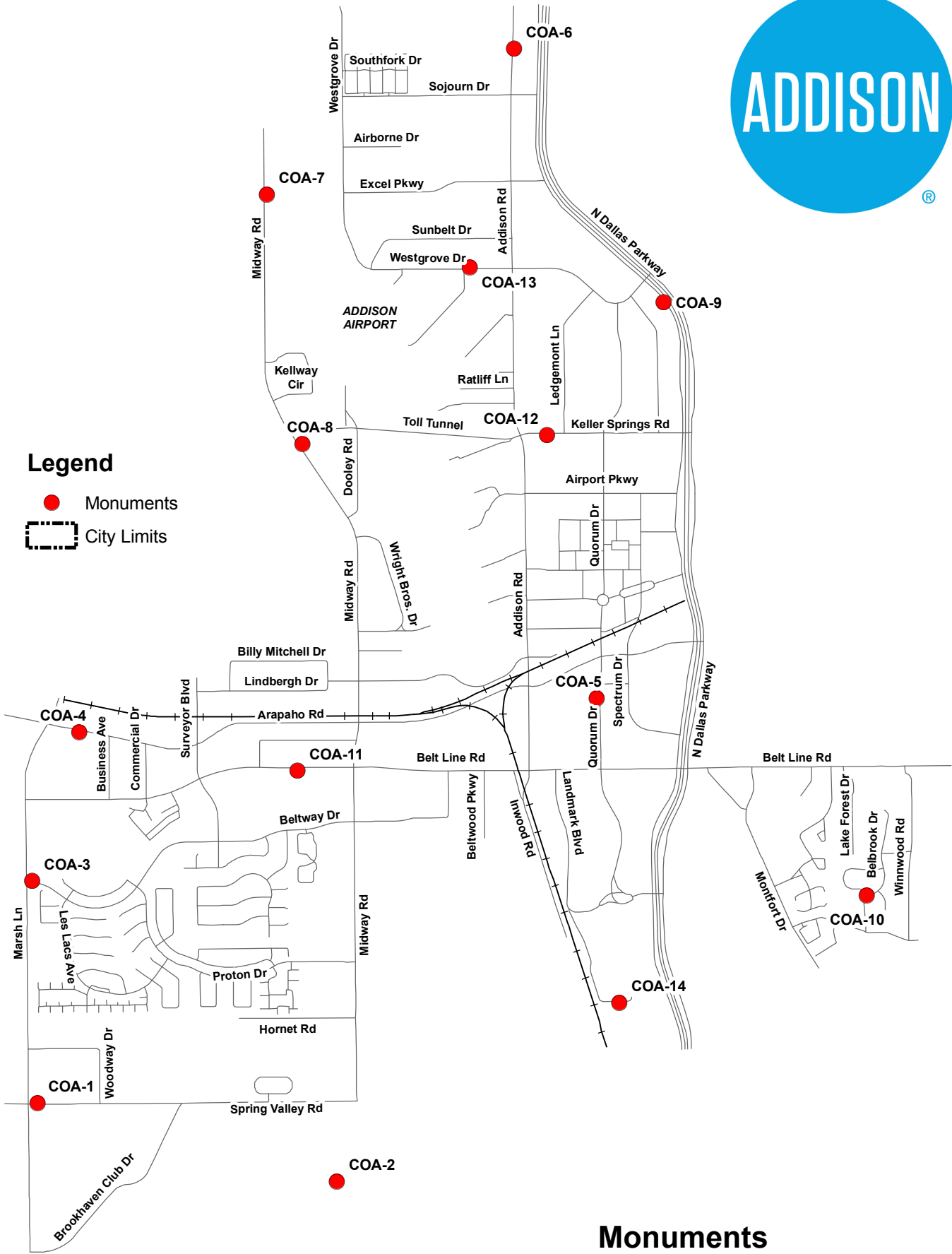


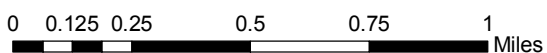


- Legend**
- Monuments
 - ▭ City Limits

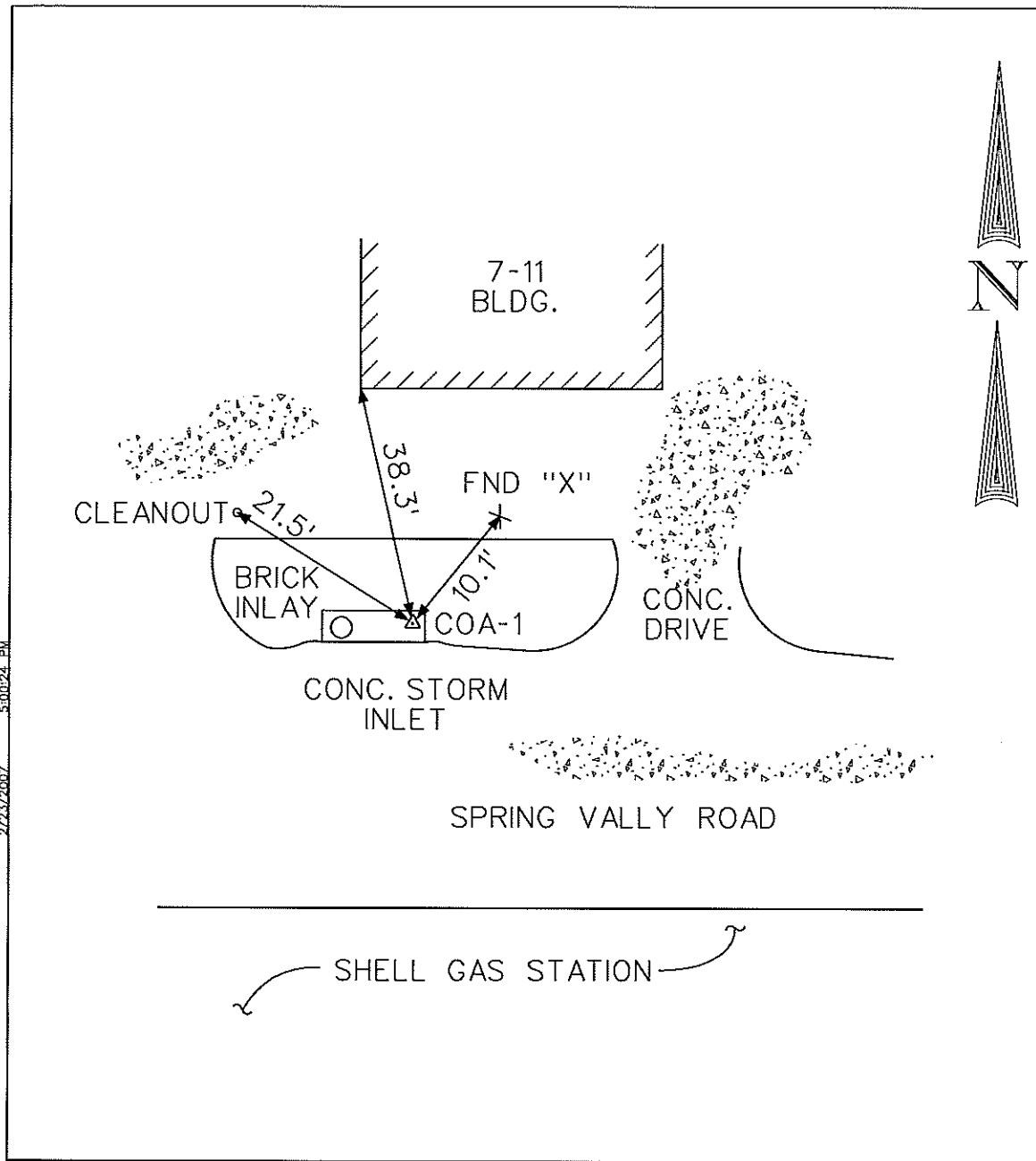


**Monuments
Town of Addison**

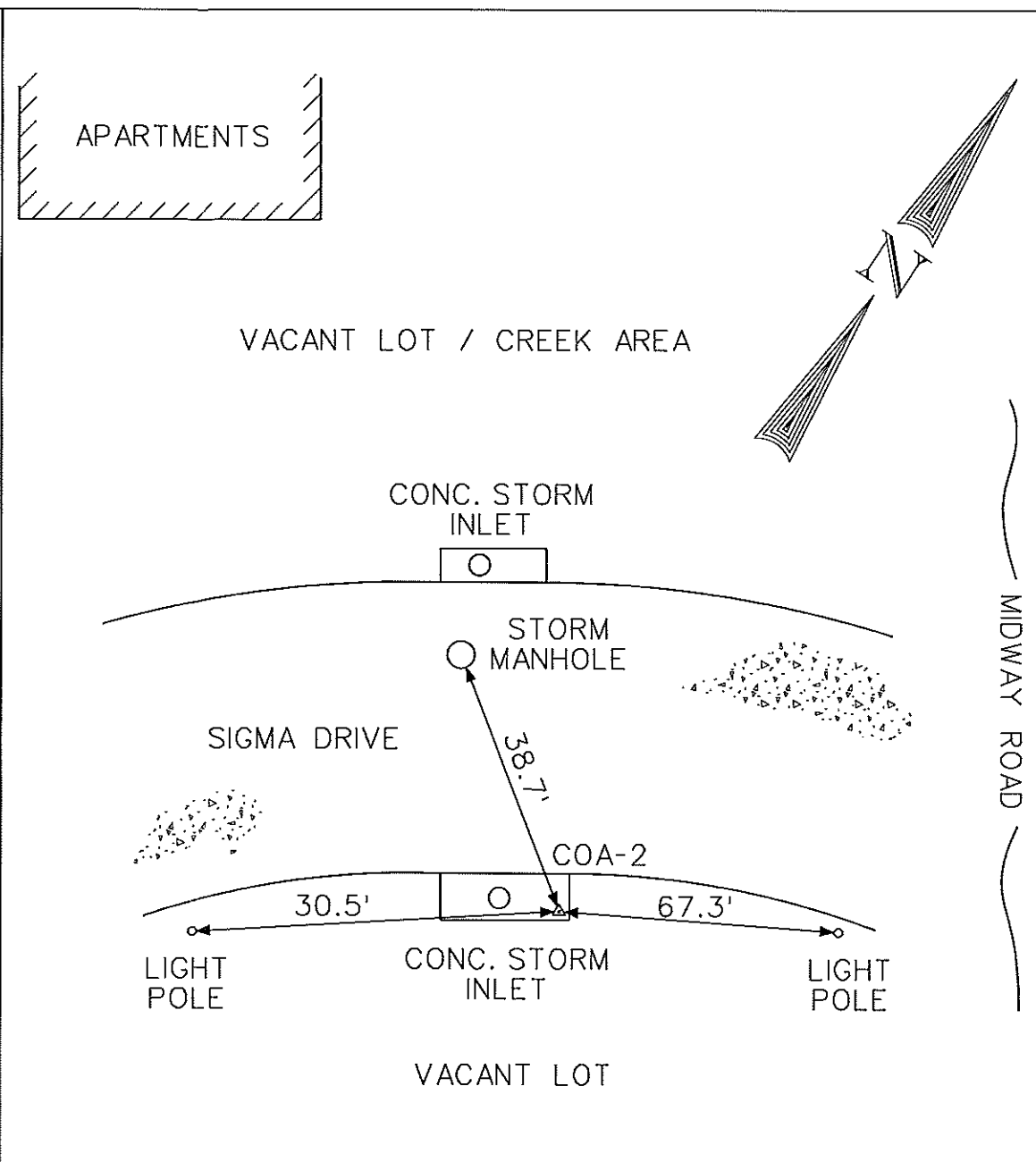
Map last updated: December 2007
 Projection: Texas State Plane, North Central Texas, FIPS 4202
 Source: Town of Addison GIS



2/23/2007 5:00:24 PM
 E:\A0701_TxDOT-Addition_GSS(Survey)\Data_Sheet\Map\Sheet182-01.dwg



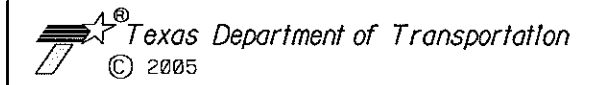
CONTROL POINT NO. COA-1
 APPROXIMATE LOCATION:
 91' EAST FROM THE INTERSECTION OF MARSH LN. & SPRING VALLEY RD. THEN 21.5' FROM CLEANOUT, 38.3' FROM SOUTHWEST CORNER OF BUILDING & 10.1' FROM FOUND "X" IN CONCRETE.
 US SURVEY FEET
 NAVD 88 ELEVATION= 573.00
 DATE SET: FEBRUARY 16, 2007
 MONUMENT: 2" BRASS DISK STAMPED "TXDOT COA-1 GPS"
 STATE PLANE COORDINATES
 NORTHING: 7028890.839
 EASTING: 2473021.889
 DALLAS COUNTY SCALE FACTOR: 1.000136506
 ELEVATIONS ARE NAVD 88 BASED UPON
 TxDOT VRS NETWORK



CONTROL POINT NO. COA-2
 APPROXIMATE LOCATION:
 269' WEST FROM THE INTERSECTION OF MIDWAY RD. & SIGMA DR. THEN 30.5' EAST OF A LIGHT POLE, 38.7' SOUTHWEST OF STORM MANHOLE & 67.3' WEST OF A LIGHT POLE.
 US SURVEY FEET
 NAVD 88 ELEVATION= 578.75
 DATE SET: FEBRUARY 16, 2007
 MONUMENT: 2" BRASS DISK STAMPED "TXDOT COA-2 GPS"
 STATE PLANE COORDINATES
 NORTHING: 7027648.304
 EASTING: 2477729.703
 DALLAS COUNTY SCALE FACTOR: 1.000136506
 ELEVATIONS ARE NAVD 88 BASED UPON
 TxDOT VRS NETWORK

I HERBY CERTIFY THAT
 THE HORIZONTAL AND
 VERTICAL DATA SHOWN
 HEREON WAS DETERMINED
 BY A FIELD SURVEY ON
 FEBRUARY 16, 2007 AND
 IS CORRECTLY
 SHOWN HEREON.

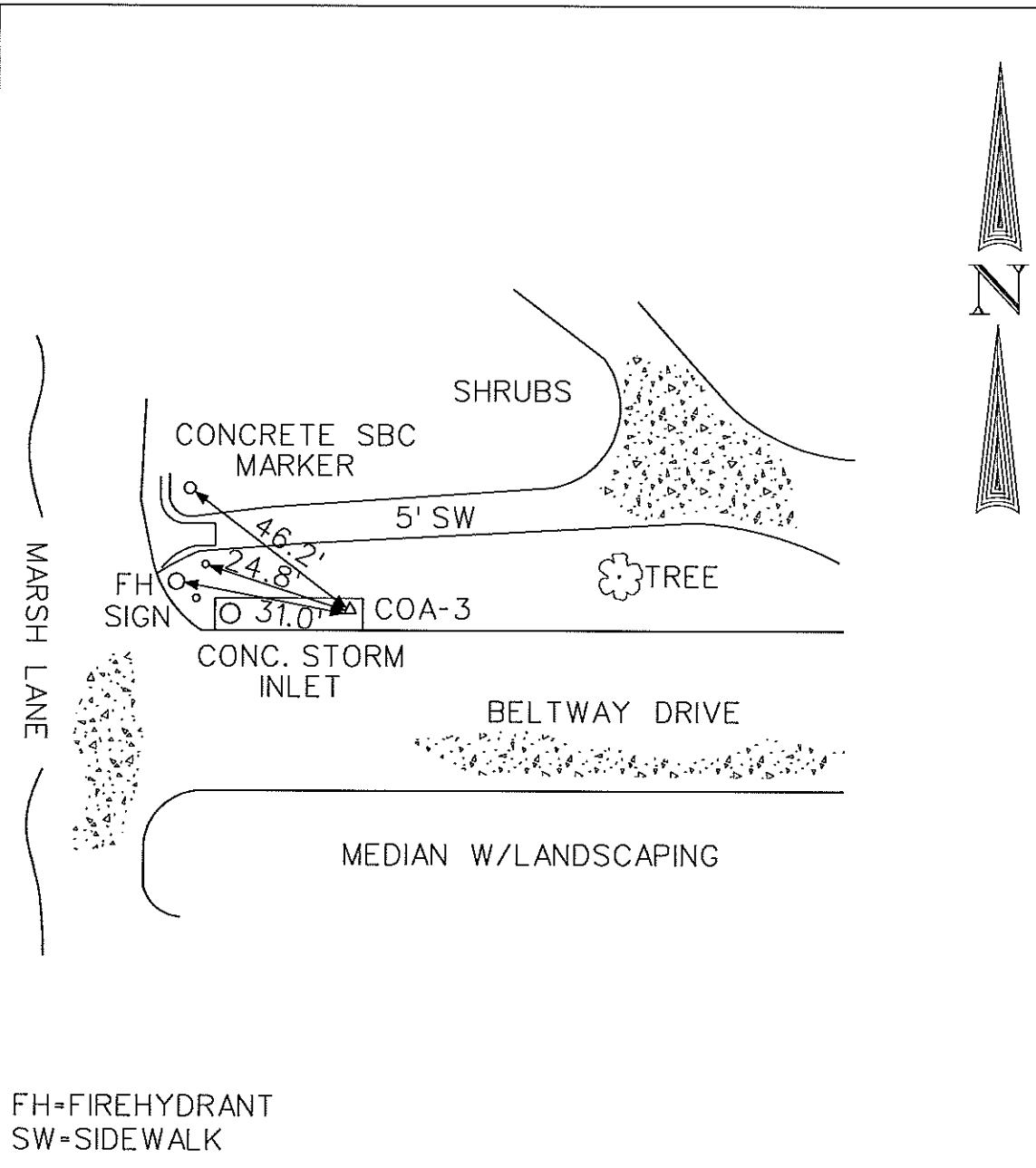
ALAN MOORE - RPLS NO. 5537



SURVEY CONTROL

SCALE:		SHEET 1 OF 8		
DESIGN	FED. RD. DIV. NO.	FEDERAL AID PROJECT NO.		HIGHWAY NO.
GRAPHICS	6			
CHECK	STATE	DISTRICT	COUNTY	SHEET NO.
CHECK	TEXAS	DALLAS	DALLAS	COA 1&2
CHECK	CONTROL	SECTION	JOB	

2/23/2007 5:01:25 PM
 F:\0701_TxDOT-Addgeon_GPS_Survey\Date_Sheets\Datamh384-01.dwg



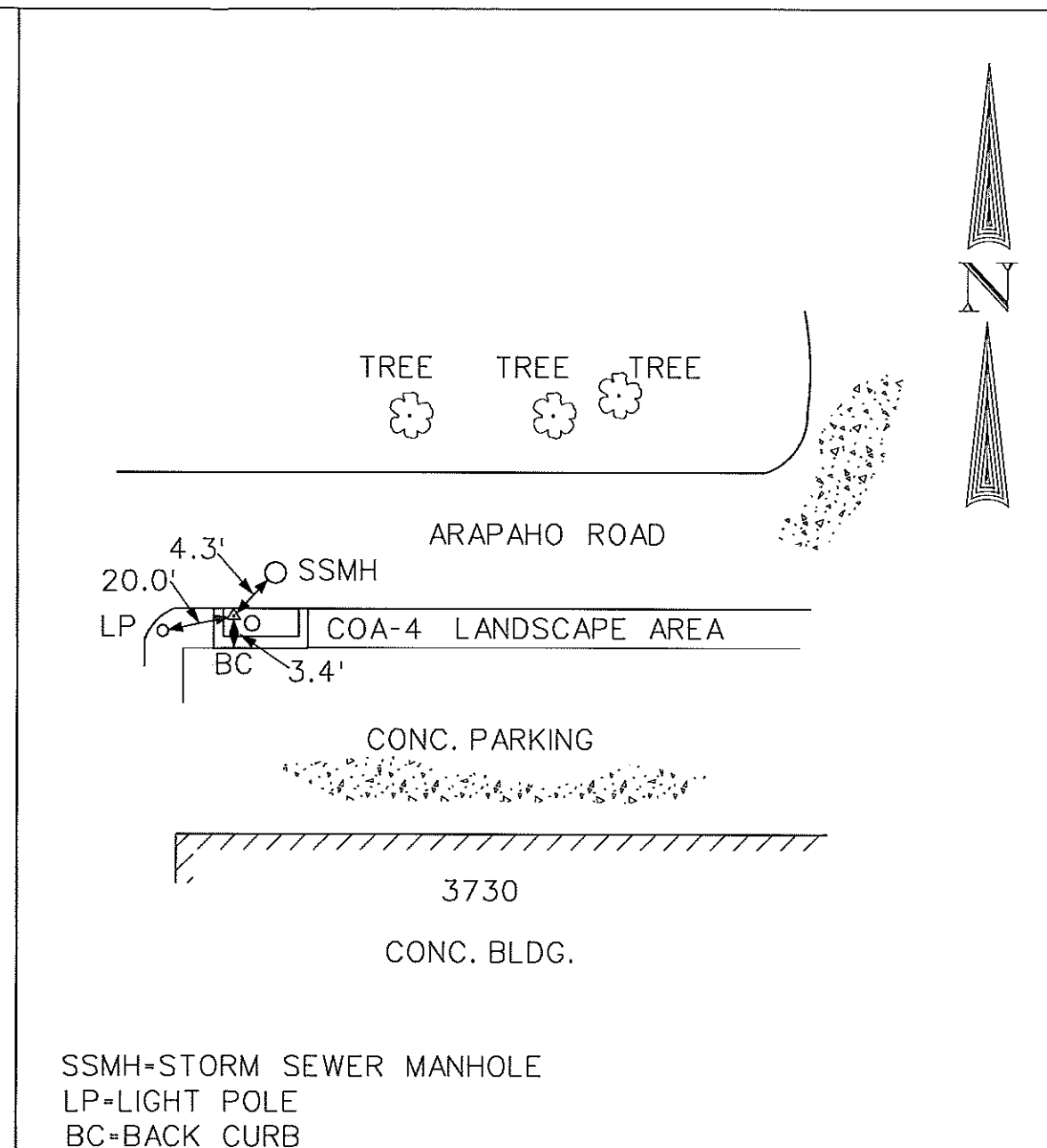
FH=FIREFHYDRANT
 SW=SIDEWALK

CONTROL POINT NO. COA-3

APPROXIMATE LOCATION:

45' EAST FROM THE INTERSECTION OF MARSH LN. &
 BELTWAY DR. THEN 31' FROM FIRE HYDRANT,
 24.8' FROM SIGN & 46.2' FROM CONCRETE SBC MARKER.

US SURVEY FEET
 NAVD 88 ELEVATION= 585.24
 DATE SET: FEBRUARY 16, 2007
 MONUMENT: 2" BRASS DISK STAMPED "TXDOT COA-3 GPS"
 STATE PLANE COORDINATES
 NORTHING: 7032377.297
 EASTING: 2472935.192
 DALLAS COUNTY SCALE FACTOR:1.000136506
 ELEVATIONS ARE NAVD 88 BASED UPON
 TxDOT VRS NETWORK



SSMH=STORM SEWER MANHOLE
 LP=LIGHT POLE
 BC=BACK CURB

CONTROL POINT NO. COA-4

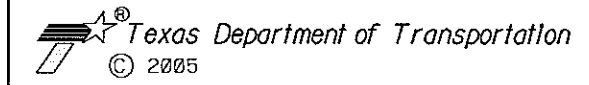
APPROXIMATE LOCATION:

450' EAST FROM THE INTERSECTION OF MARSH LN. &
 ARAPAHO RD. THEN 20' FROM LIGHT POLE, 4.3' FROM
 SANITARY SEWER MANHOLE & 3.4' SOUTH TO
 BACK OF CURB.

US SURVEY FEET
 NAVD 88 ELEVATION= 583.08
 DATE SET: FEBRUARY 16, 2007
 MONUMENT: 2" BRASS DISK STAMPED "TXDOT COA-4 GPS"
 STATE PLANE COORDINATES
 NORTHING: 7034719.123
 EASTING: 2473675.544
 DALLAS COUNTY SCALE FACTOR:1.000136506
 ELEVATIONS ARE NAVD 88 BASED UPON
 TxDOT VRS NETWORK

I HERBY CERTIFY THAT
 THE HORIZONTAL AND
 VERTICAL DATA SHOWN
 HEREON WAS DETERMINED
 BY A FIELD SURVEY ON
 FEBRUARY 16, 2007 AND
 IS CORRECTLY
 SHOWN HEREON.

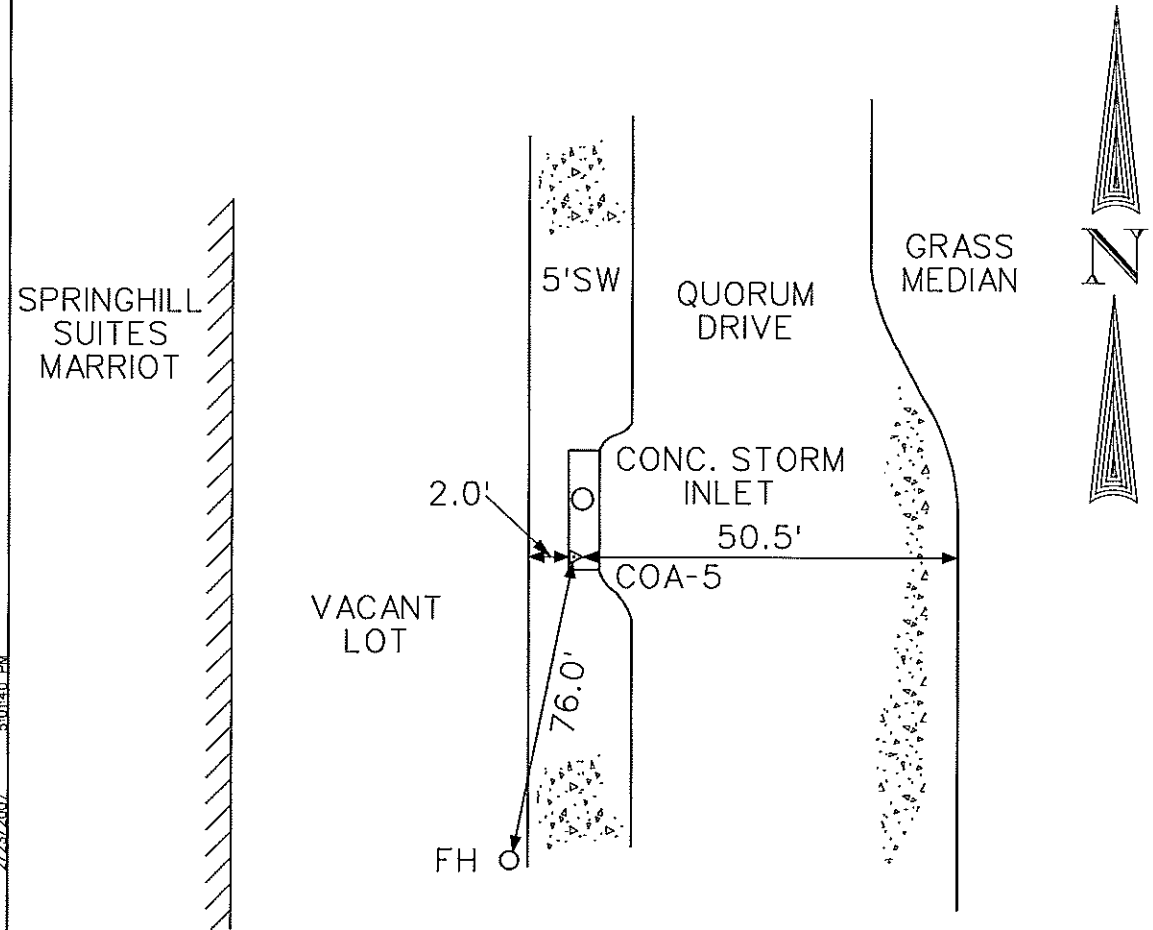
ALAN MOORE - RPLS NO. 5537



SURVEY CONTROL

SCALE:		SHEET 2 OF 8		
DESIGN	FED. RD. DIV. NO.	FEDERAL AID PROJECT NO.		HIGHWAY NO.
GRAPHICS	6	STATE	DISTRICT	COUNTY
CHECK	TEXAS	DALLAS	DALLAS	COUNTY
CHECK	CONTROL	SECTION	JOB	COA 3&4

2/23/2007 5:01:40 PM

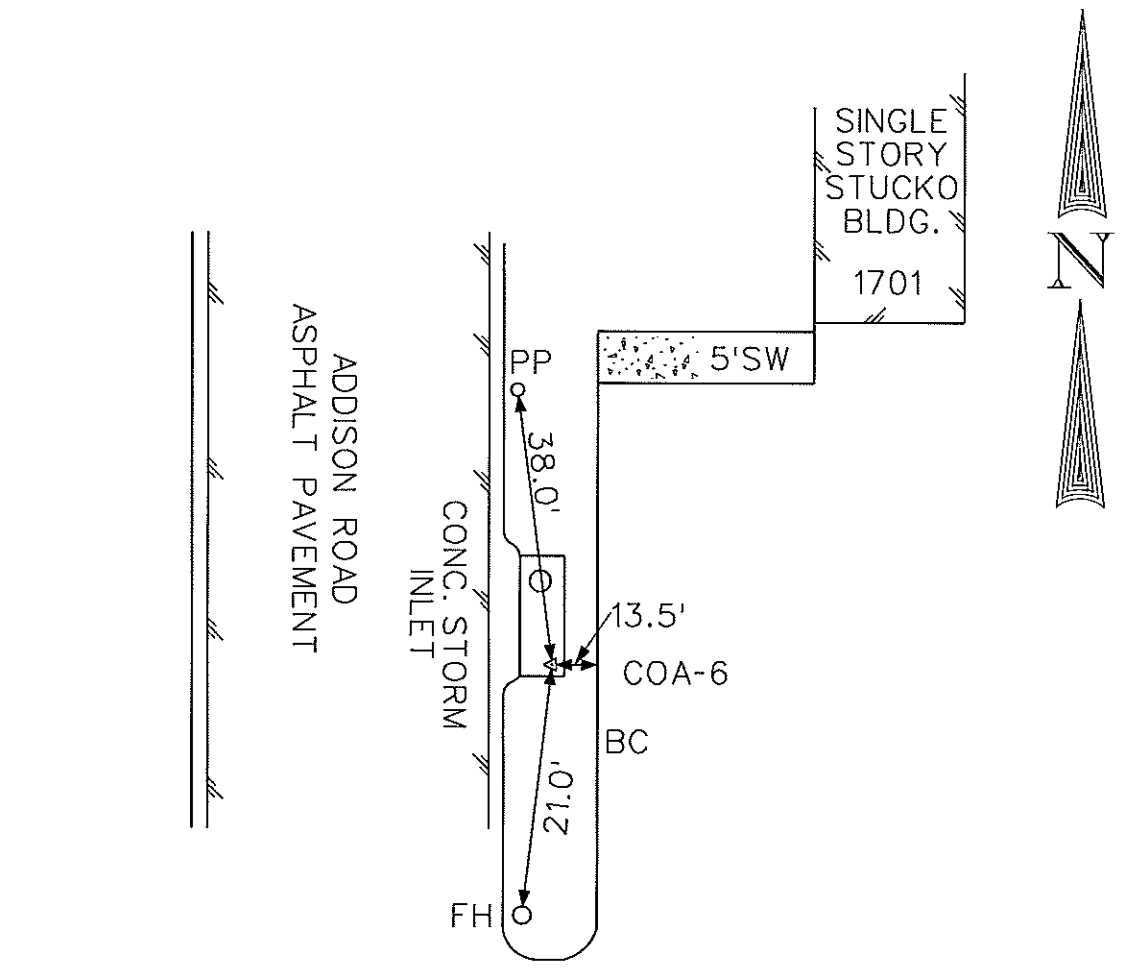


FH= FIREHYDRANT
SW= SIDEWALK

CONTROL POINT NO. COA-5

190' SOUTH FROM THE INTERSECTION OF EDWIN LEWIS DR. & QUORUM DR. THEN 2' FROM WEST EDGE OF SIDEWALK, 50.5' FROM THE WEST SIDE OF MEDIAN IN QUORUM DR. & 76' FROM FIRE HYDRANT.

US SURVEY FEET
NAVD 88 ELEVATION= 630.10
DATE SET: FEBRUARY 16, 2007
MONUMENT: 2" BRASS DISK STAMPED "TXDOT COA-5 GPS"
STATE PLANE COORDINATES
NORTHING: 7035255.886
EASTING: 2481817.062
DALLAS COUNTY SCALE FACTOR: 1.000136506
ELEVATIONS ARE NAVD 88 BASED UPON
TXDOT VRS NETWORK



SW= SIDEWALK
PP= POWER POLE
BC= BACK CURB

CONTROL POINT NO. COA-6

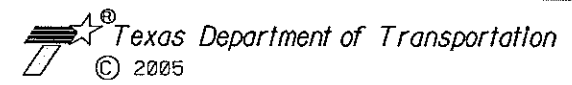
APPROXIMATE LOCATION:

710' NORTH FROM THE INTERSECTION OF SOJOURN DR. & ADDISON RD. THEN 38' FROM POWER POLE, 13.5' WEST OF BACK OF CURB & 21' FROM FIRE HYDRANT.

US SURVEY FEET
NAVD 88 ELEVATION= 639.88
DATE SET: FEBRUARY 16, 2007
MONUMENT: 2" BRASS DISK STAMPED "TXDOT COA-6 GPS"
STATE PLANE COORDINATES
NORTHING: 7045474.518
EASTING: 2480520.776
DALLAS COUNTY SCALE FACTOR: 1.000136506
ELEVATIONS ARE NAVD 88 BASED UPON
TXDOT VRS NETWORK

I HERBY CERTIFY THAT THE HORIZONTAL AND VERTICAL DATA SHOWN HEREON WAS DETERMINED BY A FIELD SURVEY ON FEBRUARY 16, 2007 AND IS CORRECTLY SHOWN HEREON.

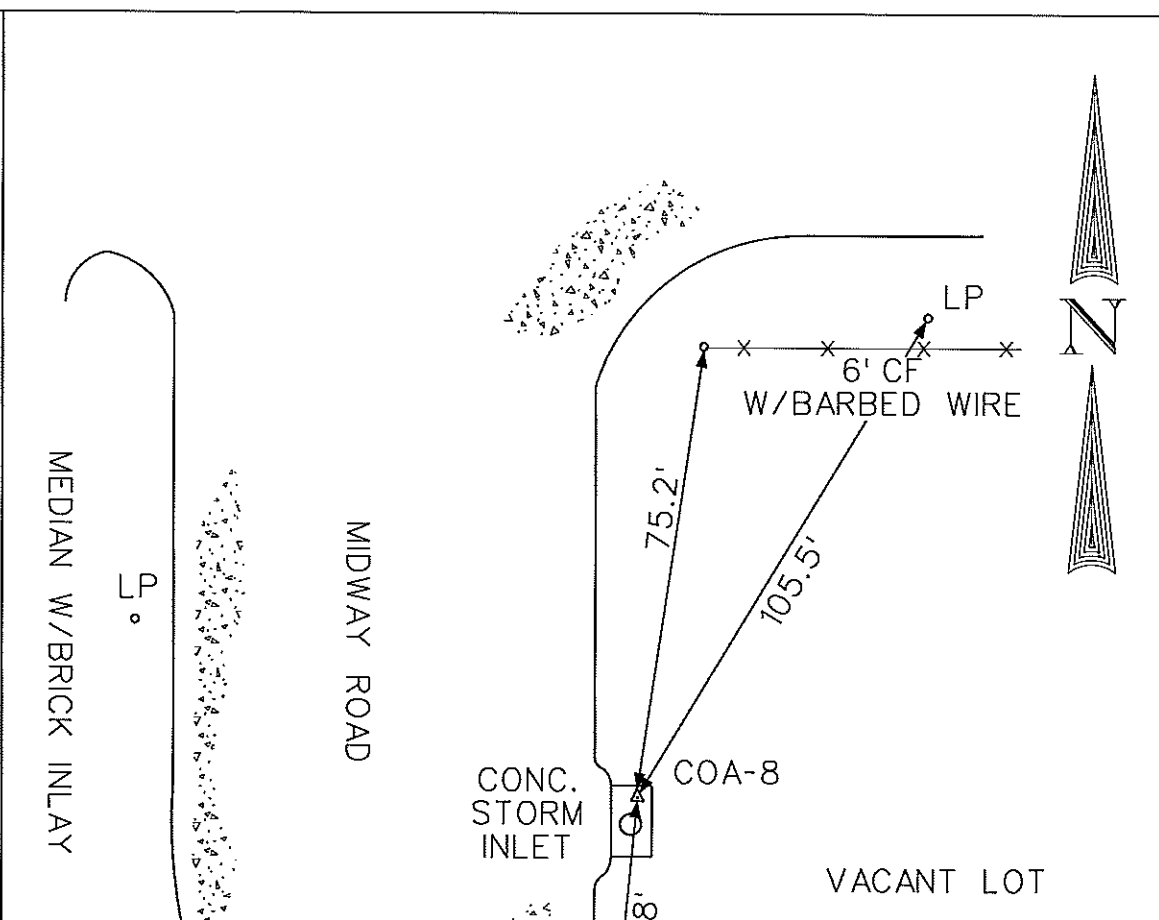
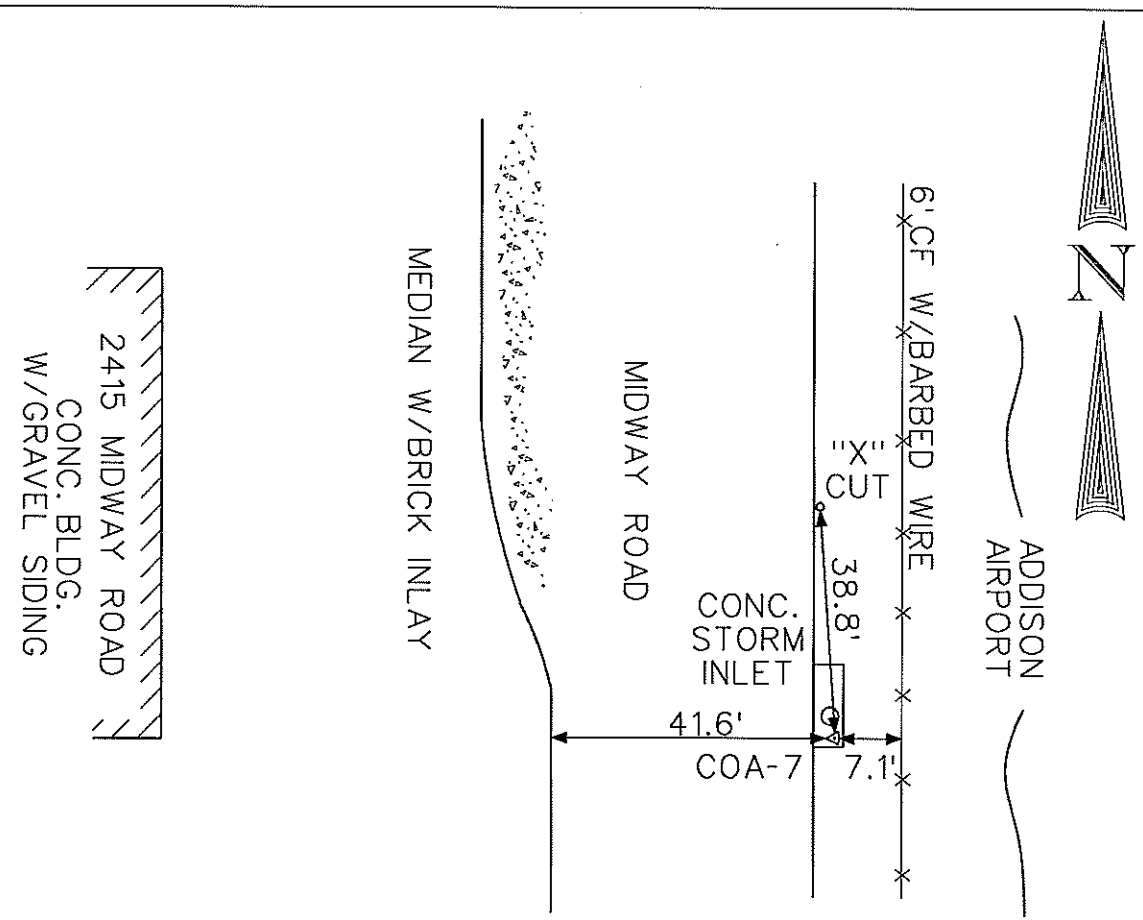
ALAN MOORE - RPLS NO. 5537



SURVEY CONTROL

SCALE:		SHEET 3 OF 8		
DESIGN	FED. RD. DIV. NO.	FEDERAL AID PROJECT NO.		HIGHWAY NO.
GRAPHICS	6			
CHECK	STATE	DISTRICT	COUNTY	SHEET NO.
CHECK	TEXAS	DALLAS	DALLAS	COA 5&6
CHECK	CONTROL	SECTION	JOB	

I HERBY CERTIFY THAT THE HORIZONTAL AND VERTICAL DATA SHOWN HEREON WAS DETERMINED BY A FIELD SURVEY ON FEBRUARY 16, 2007 AND IS CORRECTLY SHOWN HEREON.



FH= FIREHYDRANT
SW= SIDEWALK

SW= SIDEWALK
PP= POWER POLE
BC= BACK CURB

CONTROL POINT NO. COA-7

CONTROL POINT NO. COA-8

APPROXIMATE LOCATION:

APPROXIMATE LOCATION:

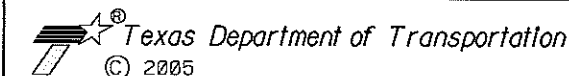
190' NORTH FROM THE INTERSECTION OF SKYLANE & MIDWAY RD. THEN 38.8' FROM AN "X" CUT, 7.10' WEST OF CHAINLINK FENCE, & 41.6' EAST OF MEDIAN IN MIDWAY RD.

200' SOUTHEAST FROM THE INTERSECTION OF KELLER SPRINGS RD. & MIDWAY RD. THEN 75.2' SOUTH OF 6' CHAINLINK FENCE, 105.5' SOUTHWEST OF LIGHT POLE & 25.8' NORTH OF STREET SIGN.

US SURVEY FEET
NAVD 88 ELEVATION= 638.98
DATE SET: FEBRUARY 16, 2007
MONUMENT: 2" BRASS DISK STAMPED "TXDOT COA-7 GPS"
STATE PLANE COORDINATES
NORTHING: 7043174.974
EASTING: 2476627.104
DALLAS COUNTY SCALE FACTOR: 1.000136506
ELEVATIONS ARE NAVD 88 BASED UPON
TXDOT VRS NETWORK

US SURVEY FEET
NAVD 88 ELEVATION= 638.75
DATE SET: FEBRUARY 16, 2007
MONUMENT: 2" BRASS DISK STAMPED "TXDOT COA-8 GPS"
STATE PLANE COORDINATES
NORTHING: 7039253.879
EASTING: 2477187.035
DALLAS COUNTY SCALE FACTOR: 1.000136506
ELEVATIONS ARE NAVD 88 BASED UPON
TXDOT VRS NETWORK

ALAN MOORE - RPLS NO. 5537

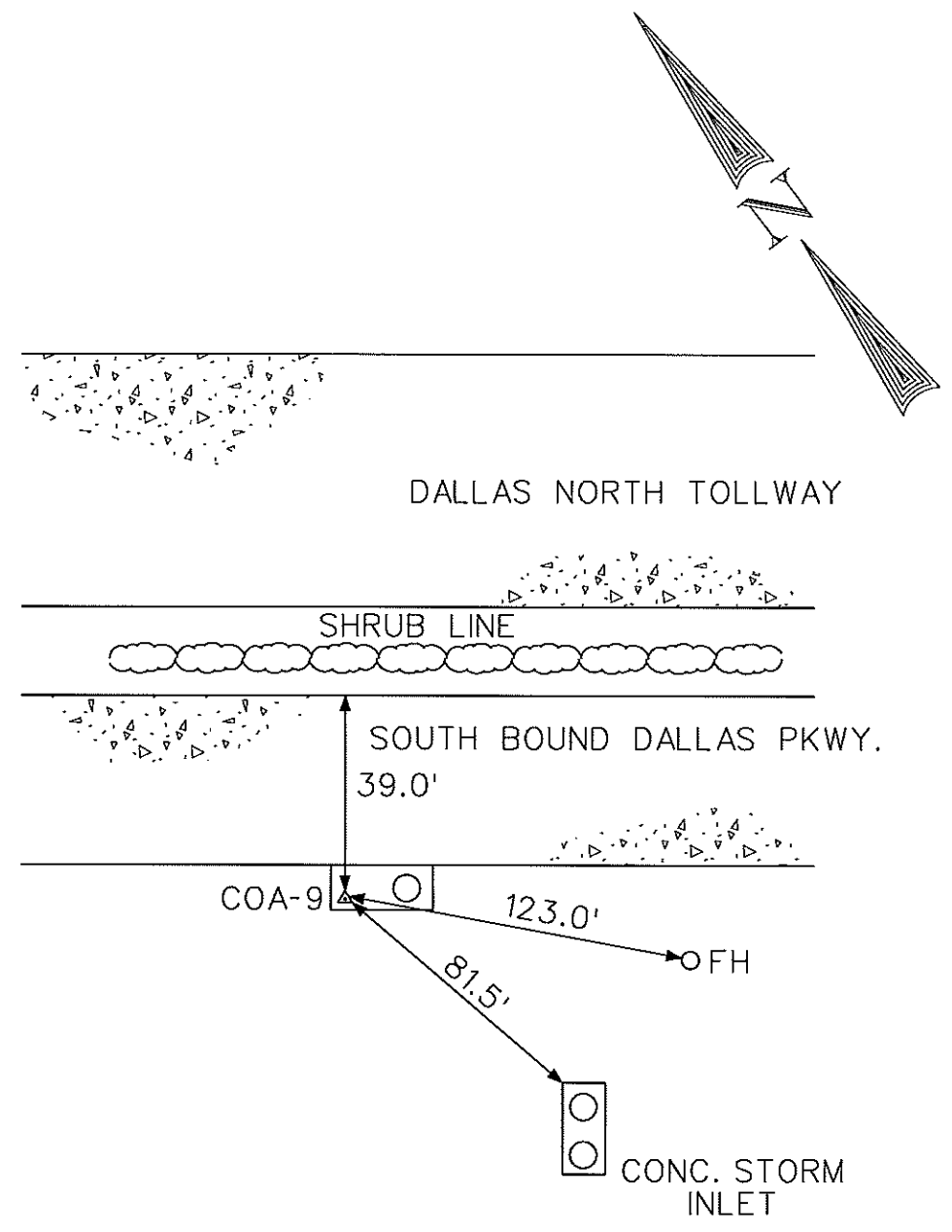


SURVEY CONTROL

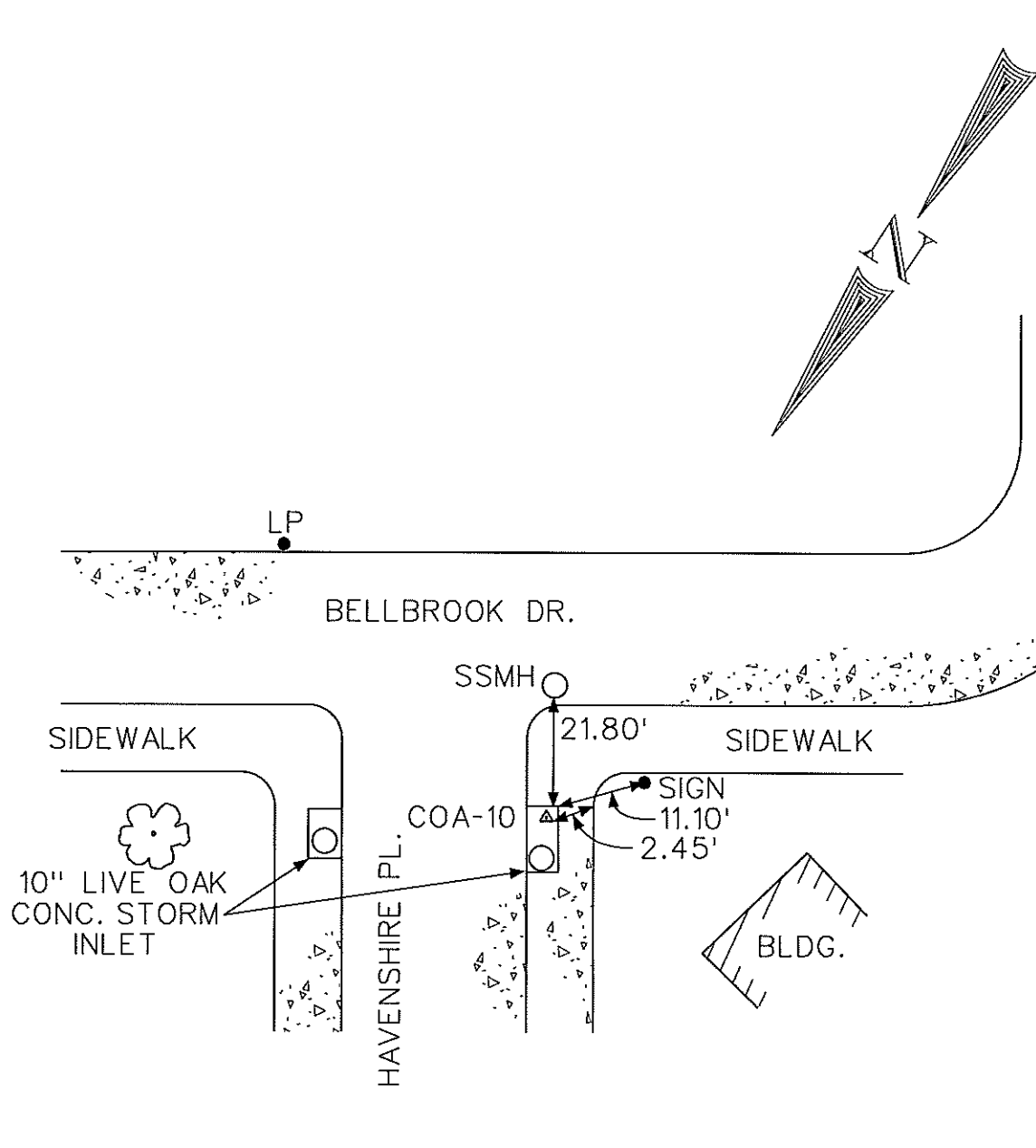
SCALE:		SHEET 4 OF 8	
DESIGN	FED. RD. DIV. NO.	FEDERAL AID PROJECT NO.	HIGHWAY NO.
GRAPHICS	6		
CHECK	STATE	DISTRICT	COUNTY
CHECK	TEXAS	DALLAS	DALLAS
CHECK	CONTROL	SECTION	JOB
			COA 7&8

P:\0701\Addition_GPS_Survey\Data_Sheets\Doc\cont7&8-01.dwg
 2/23/2007 5:01:56 PM

P:\0701_TxDOT_Addition_CSES_SurveyData_Sheets\0701.dgn
 2/23/2007 5:02:12 PM



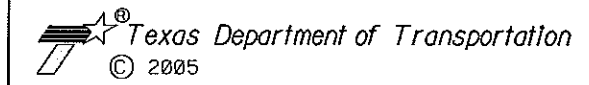
CONTROL POINT NO. COA-9
 APPROXIMATE LOCATION:
 200' SOUTHEAST FROM THE INTERSECTION OF WESTGROVE PL. & SOUTH BOUND DALLAS PWKY. THEN 39' SOUTHWEST OF NORTHEAST SIDE OF BACK OF CURB, 123' FROM FIRE HYDRANT & 81.5' NORTH EAST CORNER OF CONCRETE STORM INLET.
 US SURVEY FEET
 NAVD 88 ELEVATION= 615.34
 DATE SET: FEBRUARY 16, 2007
 MONUMENT: 2" BRASS DISK STAMPED "TXDOT COA-9 GPS"
 STATE PLANE COORDINATES
 NORTHING: 7041485.799
 EASTING: 2482872.368
 DALLAS COUNTY SCALE FACTOR:1.000136506
 ELEVATIONS ARE NAVD 88 BASED UPON
 TxDOT VRS NETWORK



CONTROL POINT NO. COA-10
 APPROXIMATE LOCATION:
 AT THE NORTHWEST CORNER OF HAVENSHIRE PL. & BELLBROOK DR. THEN 21.80' FROM SANITARY SEWER MANHOLE, 11.10' FROM STREET SIGN & 2.45' TO PC IN SIDEWALK.
 US SURVEY FEET
 NAVD 88 ELEVATION= 593.89
 DATE SET: FEBRUARY 16, 2007
 MONUMENT: 2" BRASS DISK STAMPED "TXDOT COA-10 GPS"
 STATE PLANE COORDINATES
 NORTHING: 7032148.735
 EASTING: 2486063.981
 DALLAS COUNTY SCALE FACTOR:1.000136506
 ELEVATIONS ARE NAVD 88 BASED UPON
 TxDOT VRS NETWORK

I HERBY CERTIFY THAT THE HORIZONTAL AND VERTICAL DATA SHOWN HEREON WAS DETERMINED BY A FIELD SURVEY ON FEBRUARY 16, 2007 AND IS CORRECTLY SHOWN HEREON.

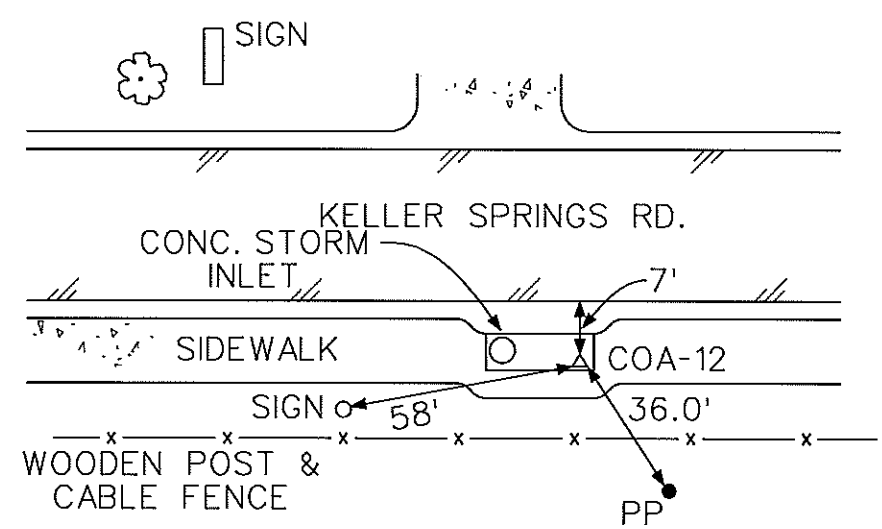
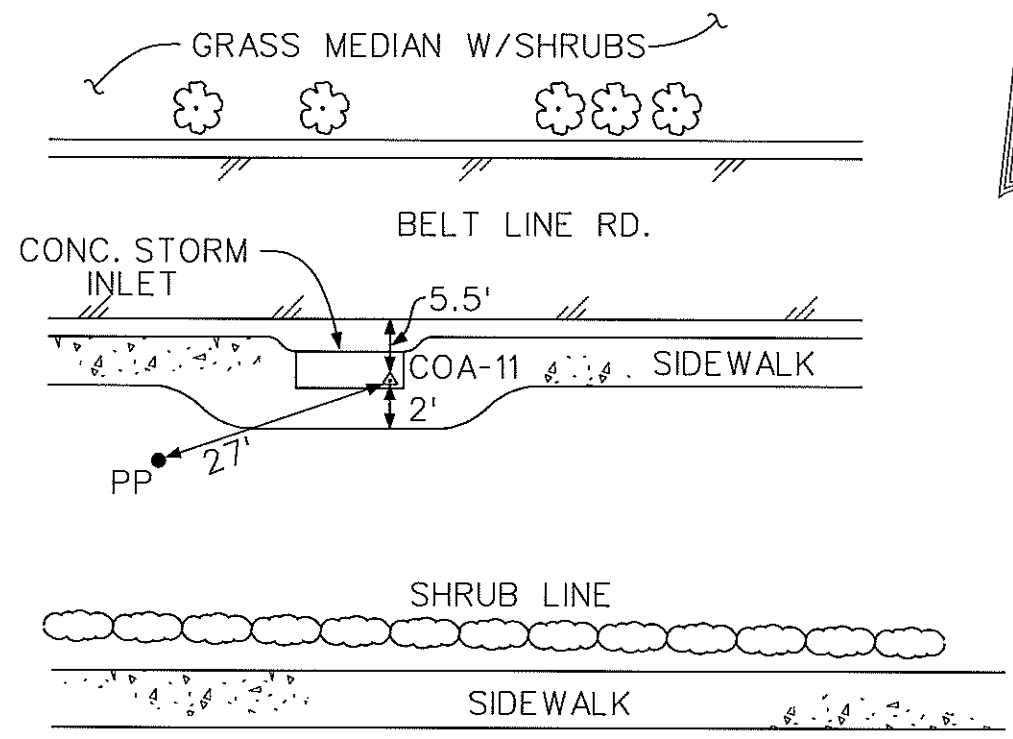
ALAN MOORE - RPLS NO. 5537



SURVEY CONTROL

SCALE:		SHEET 5 OF 8		
DESIGN	FED. RD. DIV. NO.	FEDERAL AID PROJECT NO.		HIGHWAY NO.
GRAPHICS	6	STATE	DISTRICT	COUNTY
CHECK	TEXAS	DALLAS	DALLAS	COUNTY
CHECK	CONTROL	SECTION	JOB	COA 9&10

P:\0701_TxDOT-Addison_GPS\SurveyData_Sheets\Dotcsh118_12-01.dwg
 2/23/2007 5:02:33 PM



I HERBY CERTIFY THAT
 THE HORIZONTAL AND
 VERTICAL DATA SHOWN
 HEREON WAS DETERMINED
 BY A FIELD SURVEY ON
 FEBRUARY 16, 2007 AND
 IS CORRECTLY
 SHOWN HEREON.

CONTROL POINT NO. COA-11

APPROXIMATE LOCATION:

826' WEST FROM THE INTERSECTION OF MIDWAY RD. &
 BELTLINE RD. THEN 5.5' FROM THE EDGE OF ASPHALT, 2'
 FROM THE SOUTH EDGE OF SIDEWALK & 27' FROM
 POWER POLE.

US SURVEY FEET

NAVD 88 ELEVATION= 611.74
 DATE SET: FEBRUARY 16, 2007
 MONUMENT: 2" BRASS DISK STAMPED "TXDOT COA-11 GPS"
 STATE PLANE COORDINATES
 NORTHING: 7034115.989
 EASTING: 2477111.917
 DALLAS COUNTY SCALE FACTOR:1.000136506
 ELEVATIONS ARE NAVD 88 BASED UPON
 TxDOT VRS NETWORK

CONTROL POINT NO. COA-12

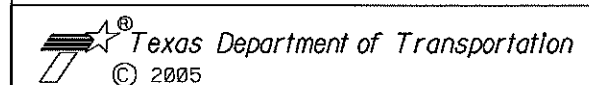
APPROXIMATE LOCATION:

360' EAST FROM THE INTERSECTION OF ADDISON RD. & KELLER
 SPRINGS RD. THEN 7' FROM THE EDGE OF ASPHALT, 36' FROM
 POWER POLE & 58' FROM STREET SIGN.

US SURVEY FEET

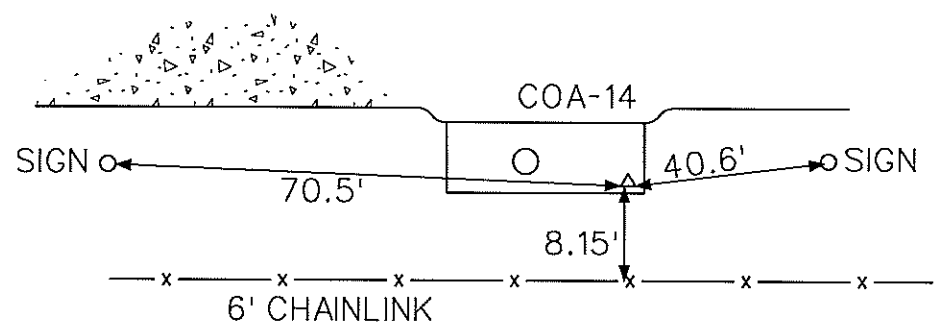
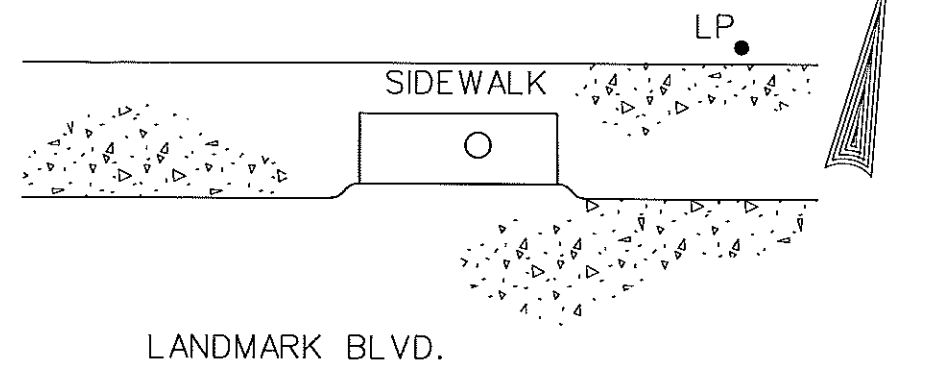
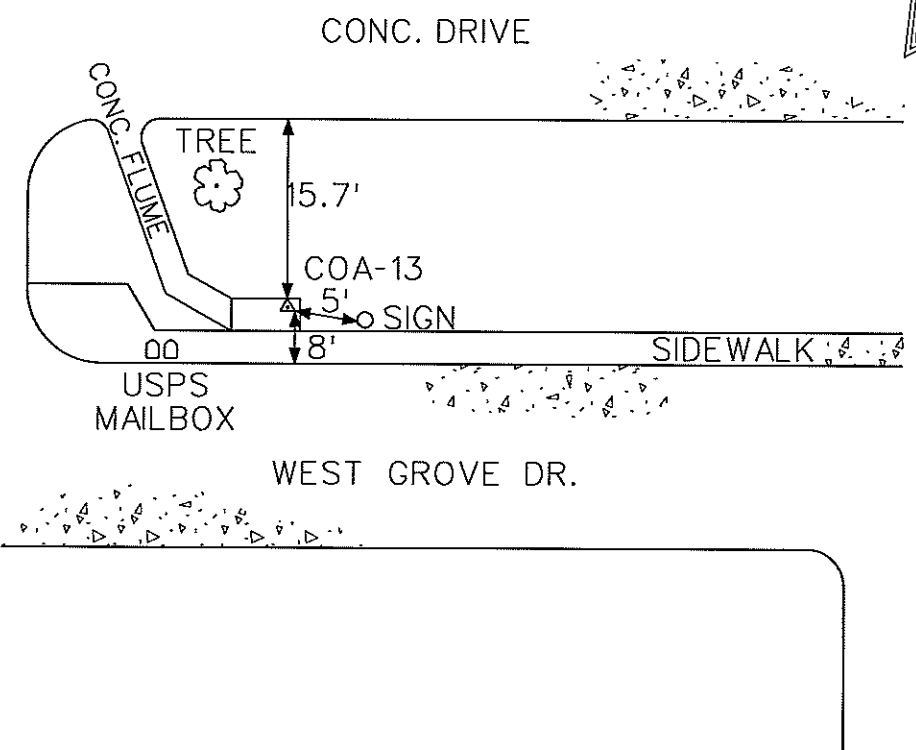
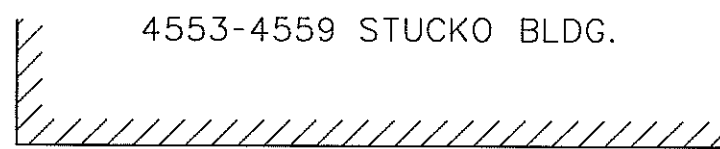
NAVD 88 ELEVATION= 637.05
 DATE SET: FEBRUARY 16, 2007
 MONUMENT: 2" BRASS DISK STAMPED "TXDOT COA-12 GPS"
 STATE PLANE COORDINATES
 NORTHING: 7039393.252
 EASTING: 2481035.921
 DALLAS COUNTY SCALE FACTOR:1.000136506
 ELEVATIONS ARE NAVD 88 BASED UPON
 TxDOT VRS NETWORK

ALAN MOORE - RPLS NO. 5537



SURVEY CONTROL

SCALE:		SHEET 6 OF 8		
DESIGN	FED. RD. DIV. NO.	FEDERAL AID PROJECT NO.		HIGHWAY NO.
GRAPHICS	6			
CHECK	STATE	DISTRICT	COUNTY	SHEET NO.
CHECK	TEXAS	DALLAS	DALLAS	COA 11&12
CHECK	CONTROL	SECTION	JOB	



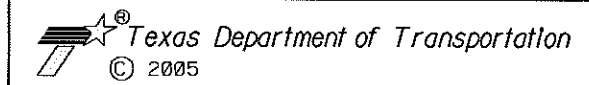
I HERBY CERTIFY THAT THE HORIZONTAL AND VERTICAL DATA SHOWN HEREON WAS DETERMINED BY A FIELD SURVEY ON FEBRUARY 16, 2007 AND IS CORRECTLY SHOWN HEREON.

2/23/2007 5:02:47 PM

CONTROL POINT NO. COA-13
 APPROXIMATE LOCATION:
 630' WEST FROM THE INTERSECTION OF ADDISON RD. & WESTGROVE DR. THEN 15.7' SOUTH FROM BACK OF CURB, 5' FROM STREET SIGN & 8' SOUTH TO BACK OF CURB OF WEST GROVE RD.
 US SURVEY FEET
 NAVD 88 ELEVATION= 642.09
 DATE SET: FEBRUARY 16, 2007
 MONUMENT: 2" BRASS DISK STAMPED "TXDOT COA-13 GPS"
 STATE PLANE COORDINATES
 NORTHING: 7042028.880
 EASTING: 2479820.516
 DALLAS COUNTY SCALE FACTOR:1.000136506
 ELEVATIONS ARE NAVD 88 BASED UPON
 TXDOT VRS NETWORK

CONTROL POINT NO. COA-14
 APPROXIMATE LOCATION:
 1,730' SOUTH EAST FROM THE INTERSECTION OF LANDMARK PL. & LANDMARK BLVD. THEN 40.6' WEST OF STREET SIGN, 8.15' NORTH OF CHAINLINK FENCE & 70.5' EAST OF STREET SIGN.
 US SURVEY FEET
 NAVD 88 ELEVATION= 623.19
 DATE SET: FEBRUARY 16, 2007
 MONUMENT: 2" BRASS DISK STAMPED "TXDOT COA-14 GPS"
 STATE PLANE COORDINATES
 NORTHING: 7030466.478
 EASTING: 2482171.600
 DALLAS COUNTY SCALE FACTOR:1.000136506
 ELEVATIONS ARE NAVD 88 BASED UPON
 TXDOT VRS NETWORK

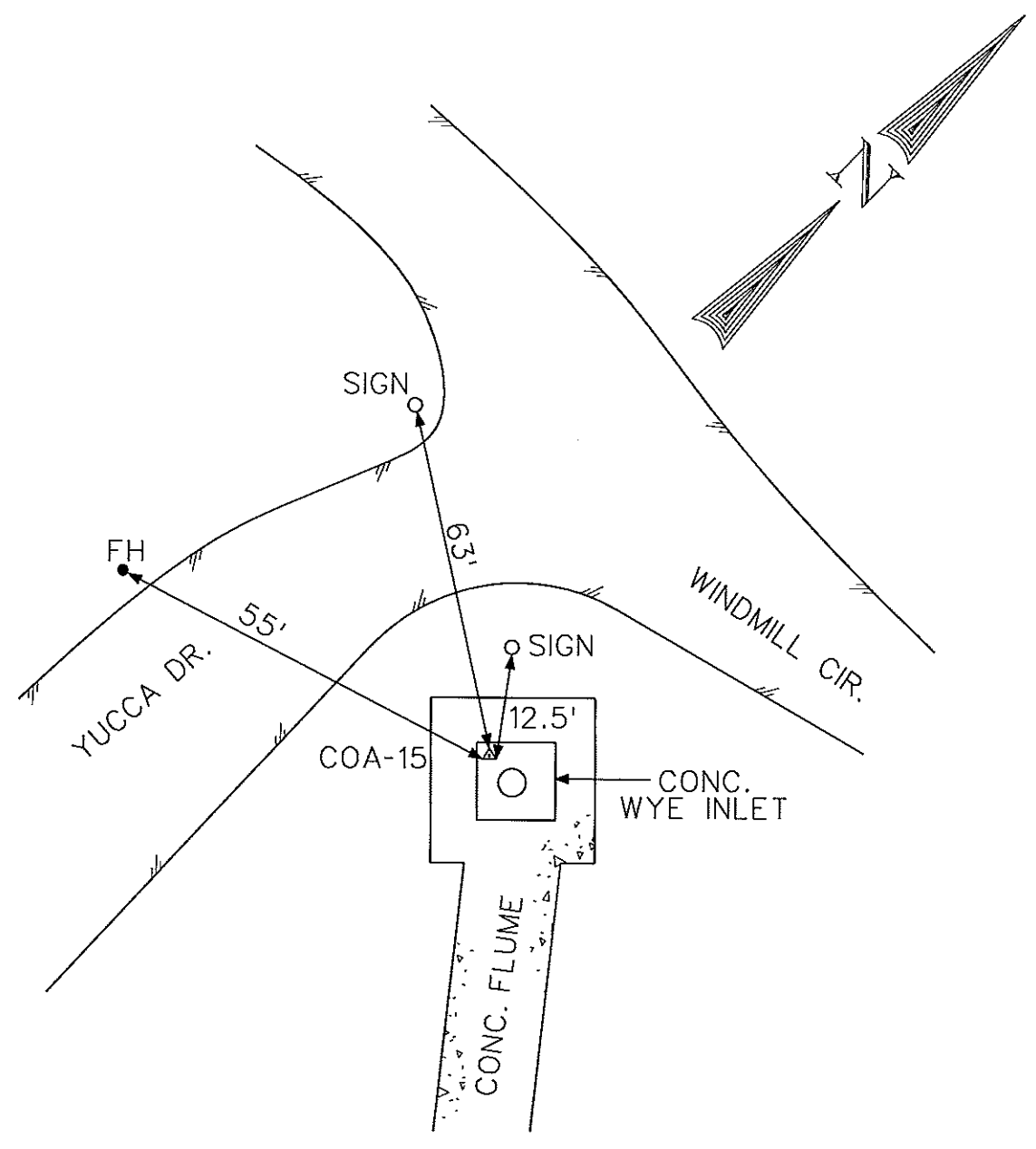
ALAN MOORE - RPLS NO. 5537



SURVEY CONTROL

SCALE:		SHEET 7 OF 8		
DESIGN	FED. RD. DIV. NO.	FEDERAL AID PROJECT NO.		HIGHWAY NO.
GRAPHICS	6	STATE	DISTRICT	COUNTY
CHECK	CONTROL	TEXAS	DALLAS	DALLAS
CHECK		SECTION	JOB	COA 13&14

5:03:01 PM
2/23/2007



CONTROL POINT NO. COA-15

APPROXIMATE LOCATION:

SOUTHEAST CORNER OF INTERSECTION OF YUCCA DR. & WINDMILL CIR. THEN 12.5' SOUTH OF STREET SIGN, 55' FROM FIRE HYDRANT & 63' SOUTH OF STREET SIGN AT SOUTHWEST CORNER OF SAID INTERSECTION.

US SURVEY FEET

NAVD 88 ELEVATION= 557.92

DATE SET: FEBRUARY 16, 2007

MONUMENT: 2" BRASS DISK STAMPED "TXDOT COA-15 GPS"

STATE PLANE COORDINATES

NORTHING: 7025498.266

EASTING: 2474398.482

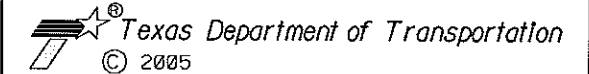
DALLAS COUNTY SCALE FACTOR: 1.000136506

ELEVATIONS ARE NAVD 88 BASED UPON

TXDOT VRS NETWORK

I HERBY CERTIFY THAT THE HORIZONTAL AND VERTICAL DATA SHOWN HEREON WAS DETERMINED BY A FIELD SURVEY ON FEBRUARY 16, 2007 AND IS CORRECTLY SHOWN HEREON.

ALAN MOORE - RPLS NO. 5537



SURVEY CONTROL

SCALE: SHEET 8 OF 8

DESIGN	FED. RD. DIV. NO.	FEDERAL AID PROJECT NO.		HIGHWAY NO.
GRAPHICS	6			
CHECK	STATE	DISTRICT	COUNTY	SHEET NO.
CHECK	TEXAS	DALLAS	DALLAS	COA 15
CHECK	CONTROL	SECTION	JOB	

P:\0701 TxDOT-Addition_GPS_Sources\Data_Sheet\Dat\sheet15-01.dwg