

STANDARD CONSTRUCTION DETAILS

TRAFFIC

JANUARY 2022



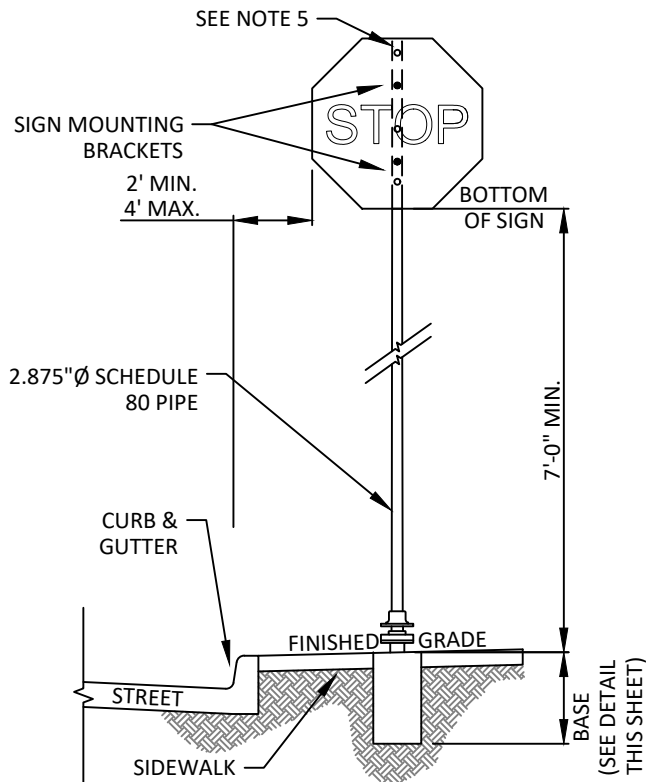
PUBLIC WORKS & ENGINEERING SERVICES

TABLE OF CONTENTS

TRAFFIC

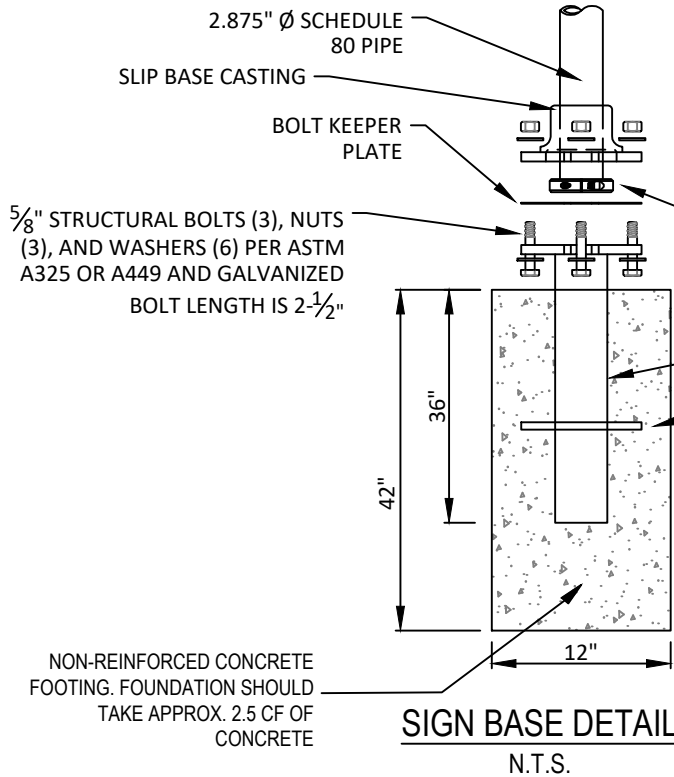
SIGN POST IN TURF DETAIL	SD-T01
SIGN POST IN SIDEWALK DETAIL	SD-T02
STREET NAME SIGN SPECIFICATIONS	SD-T03
TYPICAL PAVEMENT MARKING LAYOUT	SD-T04
TYPICAL PAVEMENT MARKING DETAILS	SD-T05

1. TRAFFIC GENERAL NOTES ARE IN THE TOWN OF ADDISON GENERAL CONSTRUCTION NOTES DOCUMENT.
2. CONSTRUCTION SHALL COMPLY WITH THE LATEST EDITION OF NCTCOG DETAILS AND SPECIFICATIONS, THE LATEST EDITION OF TMUTCD, AND THESE STANDARDS. WHEN THE NCTCOG MANUAL AND THESE STANDARDS ARE IN CONFLICT, THESE DETAILS SHALL GOVERN.
3. STANDARD DETAILS CONTAINED HEREIN ARE THE MINIMUM STANDARDS, MORE STRINGENT CRITERIA MAY BE REQUIRED AT THE DIRECTION OF PUBLIC WORKS & ENGINEERING SERVICES.



TYPICAL POST DETAIL

N.T.S.



SIGN BASE DETAIL

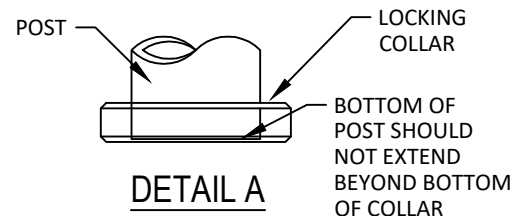
N.T.S.

NOTES:

1. ALL SIGNAGE, BARRICADES, AND PAVEMENT MARKINGS SHALL BE IN ACCORDANCE WITH THE LATEST REVISIONS OF THE TEXAS MANUAL ON UNIFORM TRAFFIC CONTROL DEVICES AND THE STANDARD HIGHWAY SIGN DESIGNS FOR TEXAS.
2. LOCATIONS SHOWN FOR SIGNAGE AND PAVEMENT MARKINGS ARE APPROXIMATE; FINAL LOCATIONS MAY CHANGE DUE TO POST CONSTRUCTION CONDITIONS AND PRESENCE OF OTHER PHYSICAL FEATURES. FINAL LOCATION OF ALL TRAFFIC CONTROL DEVICES SHALL BE FIELD VERIFIED WITH THE PUBLIC WORKS AND ENGINEERING SERVICES PRIOR TO INSTALLATION.
3. ALL SIGNS SHALL BE DIAMOND GRADE 3 WITH REFLECTIVITY SHEETING AND THE SIZES SHALL BE PER THE PRESCRIBED STANDARDS REFERENCED ABOVE, UNLESS OTHERWISE NOTED.
4. ALL SIGNS, POSTS, AND MATERIALS SHALL BE INSTALLED PER DETAILS IN THIS MANUAL.
5. FOR STOP SIGNS THAT WILL ACCEPT FUTURE STREET SIGNS, EXTEND POST ABOVE THE STOP SIGN SO THAT 2 HOLES ARE AVAILABLE FOR MOUNTING AN EXTENSION TUBE. FOR ALL OTHERS, POST SHALL NOT EXTEND ABOVE THE SIGN.
6. CHANGES TO TYPICAL SIGN POST LOCATION MAY BE MADE AT TOWN ENGINEER'S DISCRETION.

SPECIFICATIONS FOR SCHEDULE 80 PIPE (2.875" OUTSIDE DIAMETER)

- 0.267" NOMINAL WALL THICKNESS
- STEEL TUBING PER ASTM A500 Gr C
- OTHER SEAMLESS OR ELECTRIC-RESISTANT WELDED STEEL TUBING OR PIPE WITH EQUIVALENT OUTSIDE DIAMETER AND WALL THICKNESS MAY BE USED IF IT MEETS THE FOLLOWING:
 - 46,000 PSI MINIMUM YIELD STRENGTH
 - 62,000 PSI MINIMUM TENSILE STRENGTH
 - 21% MINIMUM ELONGATION IN 2"
- WALL THICKNESS (UNCOATED) SHALL BE WITHIN THE RANGE OF 0.248" TO 0.304"
- OUTSIDE DIAMETER (UNCOATED) SHALL BE WITHIN THE RANGE OF 2.855" TO 2.895"
- POWDER COATED FINISH, COLOR TO BE SELECTED BY THE TOWN OF ADDISON



DETAIL A

N.T.S.

NOTES:

1. THE GENERAL LAYOUT AND FORMAT OF THE STREET NAME SIGN SHALL BE AS SHOWN IN THE GRAPHIC ABOVE.
2. THE SIGN SHALL BE FABRICATED ON AN ALODINE COATED ALUMINUM SUBSTRATE, 0.080" THICK, AND SHALL BE 9" IN HEIGHT. THE LENGTH OF THE SIGN SHALL BE PROPORTIONATE TO THE STREET NAME, INCLUDING STREET NAME, SUFFIX, AND BLOCK NUMBER. THE SUBSTRATE SHALL HAVE AN APPROPRIATE RADIUS ON ALL FOUR CORNERS AND SHALL BE OF A FLAT BLADE DESIGN (EXTRUDED SUBSTRATE IS NOT ACCEPTABLE).
3. THE SUBSTRATE SHALL BE SHEETED WITH RETROREFLECTIVE, HIGH INTENSITY PRISMATIC MATERIAL (DIAMOND GRADE SHEETING (DG3)) AND SHALL BE WHITE IN COLOR. A PRESSURE SENSITIVE ELECTRO CUT OVERLAY FILM WILL BE USED FOR THE LETTERING AND WILL BE BLUE IN COLOR. THE FONT FOR ALL LETTERING AND NUMBERS SHALL BE BOLD HIGHWAY SERIES 'C'.
4. THE FIRST LETTER OF THE STREET NAME SHALL BE 5" IN HEIGHT. THE SUBSEQUENT LETTERS OF THE STREET NAME SHALL BE 4" IN HEIGHT. THE LETTERING OF THE SUFFIX SHALL BE ALL CAPITAL LETTERS AND SHALL BE 2.5" IN HEIGHT. THE SUFFIX MAY BE ABBREVIATED. THE SUFFIX SHALL BE PLACED IN THE UPPER RIGHT HAND CORNER OF THE SIGN. THE BLOCK NUMBER SHALL BE PLACED IN THE LOWER RIGHT HAND CORNER OF THE SIGN.

Addison Rd
15600

