

STANDARD
CONSTRUCTION
DETAILS

FRANCHISE UTILITIES
TRENCHLINE & STREET
RESTORATION

JANUARY 2022



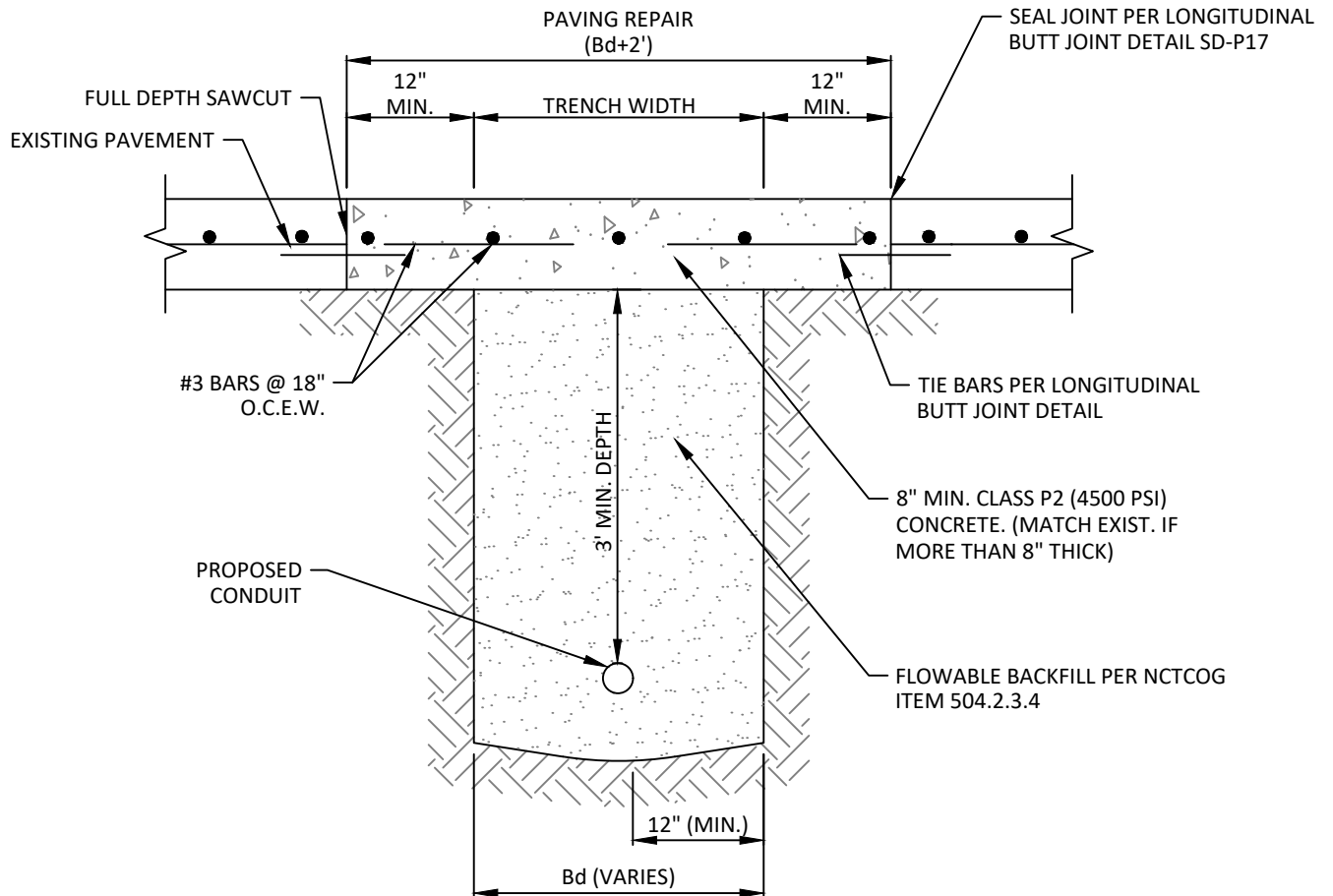
PUBLIC WORKS & ENGINEERING SERVICES

TABLE OF CONTENTS

STREET RESTORATION FOR UTILITIES

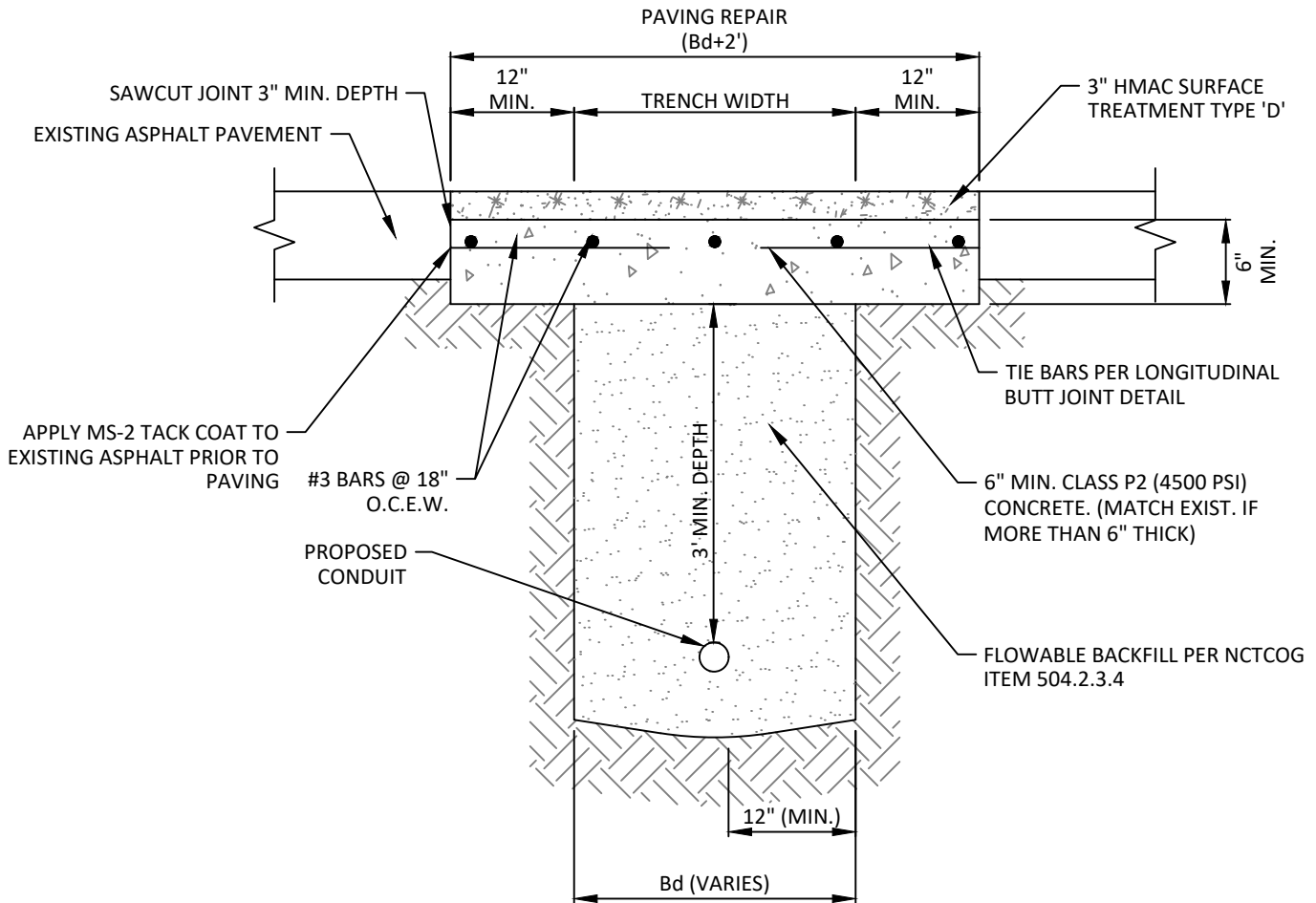
UTILITY INSTALLATION BENEATH CONCRETE ROAD SURFACE	SD-U01
UTILITY INSTALLATION BENEATH ASPHALT ROAD SURFACE	SD-U02
UTILITY INSTALLATION BENEATH SIDEWALK	SD-U03
UTILITY INSTALLATION WITHIN TURF AREAS	SD-U04
CONCRETE STREET CUT REPAIRS (EXAMPLE 1)	SD-U05
CONCRETE STREET CUT REPAIRS (EXAMPLE 2)	SD-U06
ASPHALT STREET CUT REPAIRS	SD-U07

1. CONSTRUCTION SHALL COMPLY WITH THE LATEST EDITION OF NCTCOG DETAILS AND SPECIFICATIONS, AND THESE DETAILS. WHEN DETAILS/SPECIFICATIONS ARE IN CONFLICT, TOWN DETAILS SHALL GOVERN.
2. STANDARD DETAILS CONTAINED HEREIN ARE THE MINIMUM STANDARDS, MORE STRINGENT CRITERIA MAY BE REQUIRED AT THE DIRECTION OF PUBLIC WORKS & ENGINEERING SERVICES.



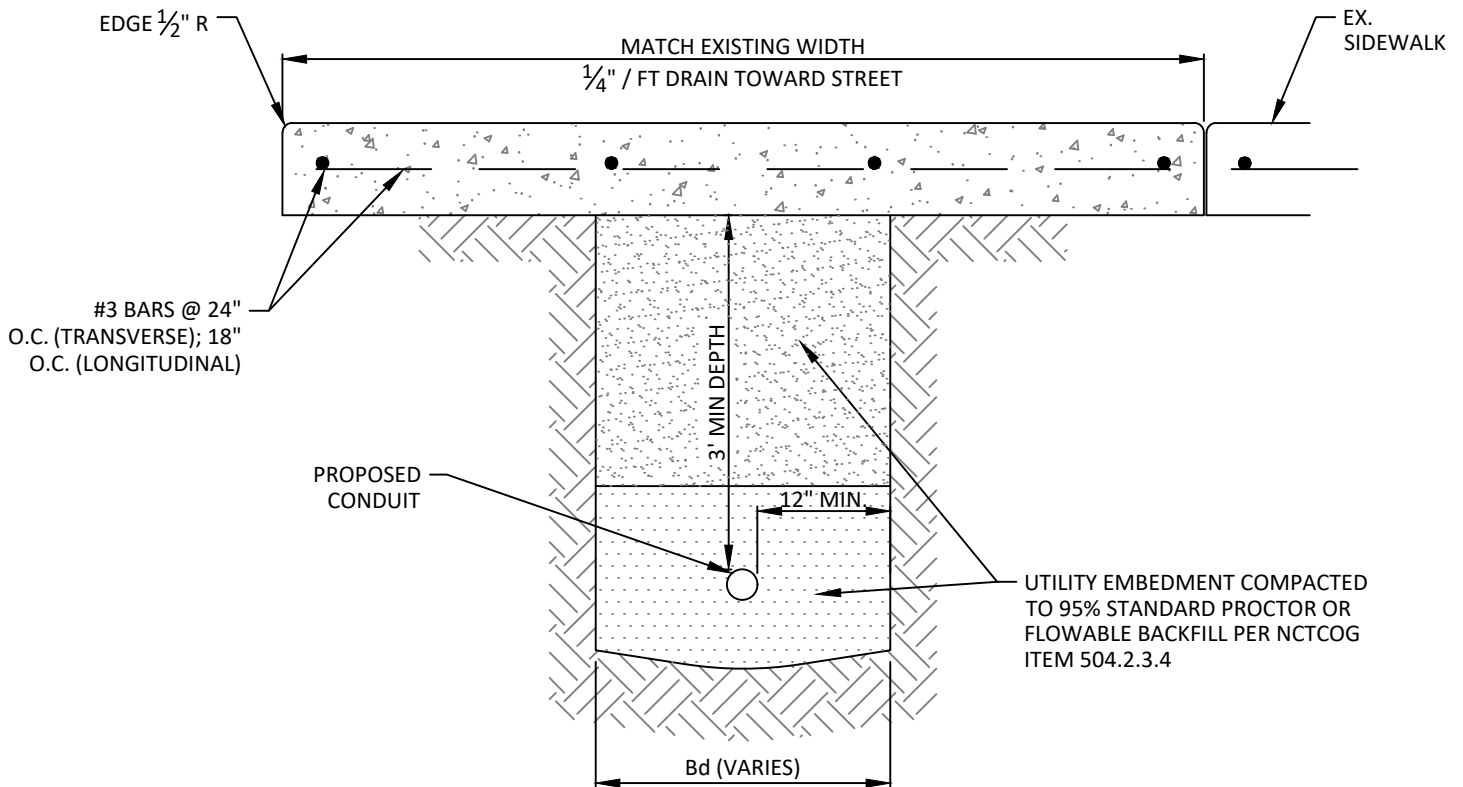
NOTES:

1. REPAIRS SHALL EXTEND TO 1' BEYOND EACH SIDE OF TRENCH (Bd).
2. REINFORCEMENT CHAIRS OR APPROVED EQUAL SHALL BE USED.
3. REPAIRS SHALL MATCH EXISTING GRADE.
4. NOT LESS THAN HALF A PANEL SHALL REMAIN AFTER SAWCUT.
5. TOWN INSPECTOR WILL DETERMINE FINAL PAVEMENT REMOVAL LIMITS. ACTUAL LIMITS OF REMOVAL MAY VARY BASED ON SITE CONDITIONS.



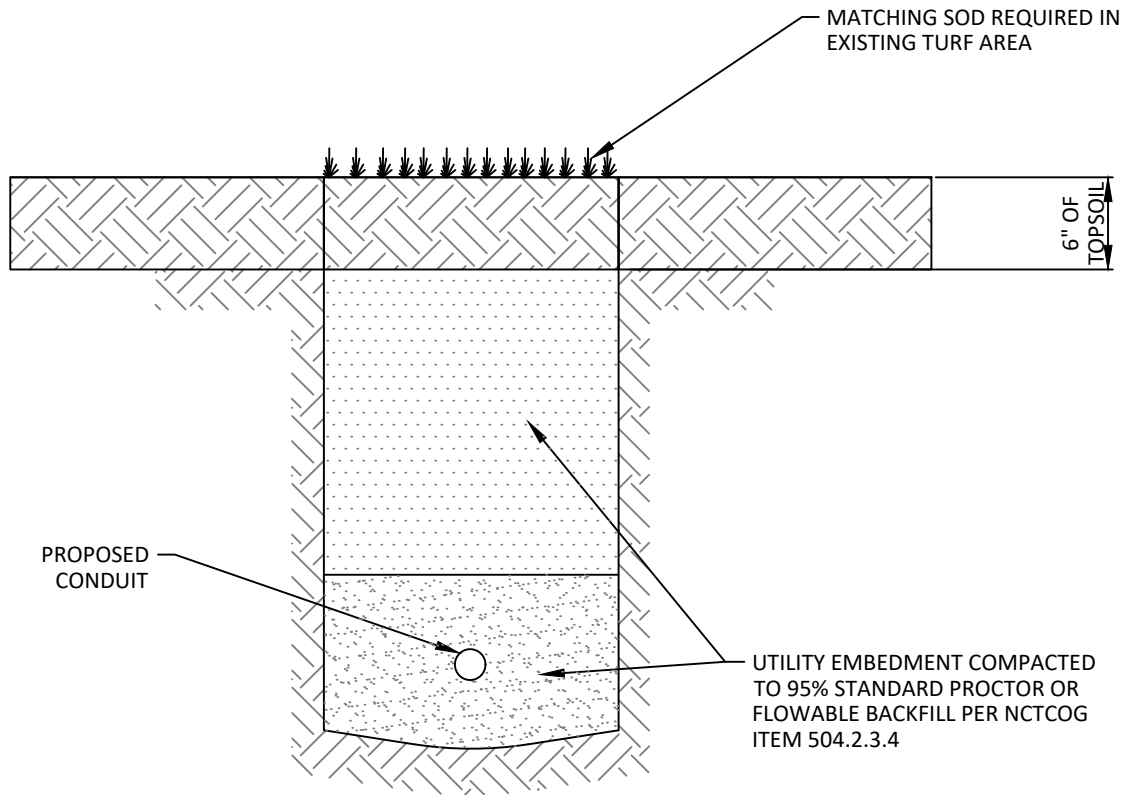
NOTES:

1. REPAIRS SHALL EXTEND TO 1' BEYOND EACH SIDE OF TRENCH (Bd).
2. REPAIRS SHALL MATCH EXISTING GRADE.
3. TOWN INSPECTOR WILL DETERMINE FINAL PAVEMENT REMOVAL LIMITS. ACTUAL LIMITS OF REMOVAL MAY VARY BASED ON SITE CONDITIONS.



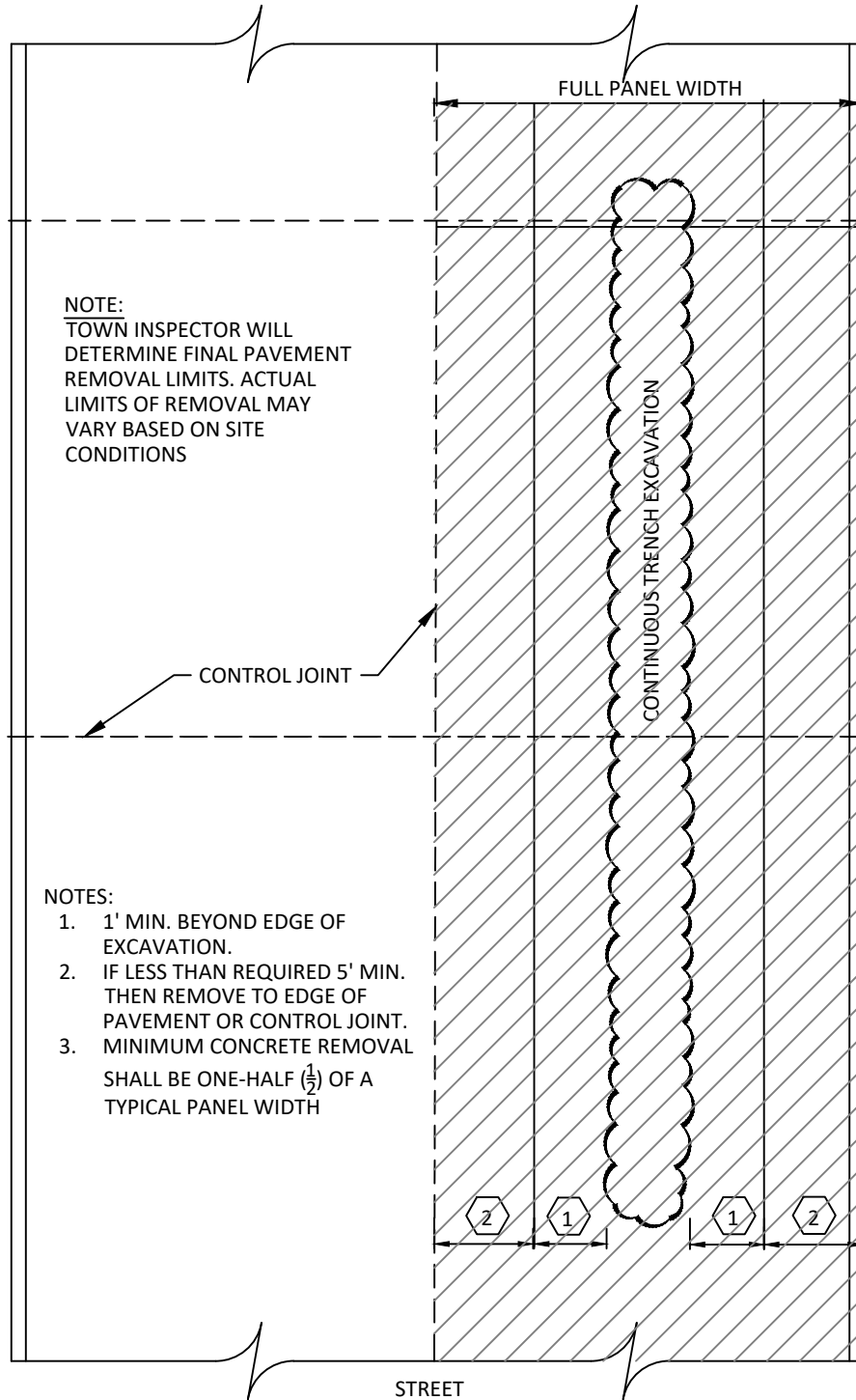
NOTES:

1. REPAIRS SHALL INCLUDE FULL PANELS FROM JOINT TO JOINT, AND ANY ADJACENT DAMAGED PANELS INDEPENDENT OF Bd.
2. REINFORCEMENT CHAIRS OR APPROVED DEVICE SHALL BE USED.
3. SEE CONCRETE SIDEWALK STANDARD DETAIL FOR SIDEWALK JOINT DETAIL.
4. ALL DISTURBED AREAS SHALL BE RESODDED (UNLESS OTHERWISE APPROVED).
5. BACKFILL AND EMBEDMENT PARTICLE SIZE SHALL NOT EXCEED 3" IN ANY DIRECTION.
6. CONNECT TO EXISTING SIDEWALK WITH BARS MATCHING EXISTING INSTALLATION.
7. TOWN INSPECTOR WILL DETERMINE FINAL PAVEMENT REMOVAL LIMITS. ACTUAL LIMITS OF REMOVAL MAY VARY BASED ON SITE CONDITIONS

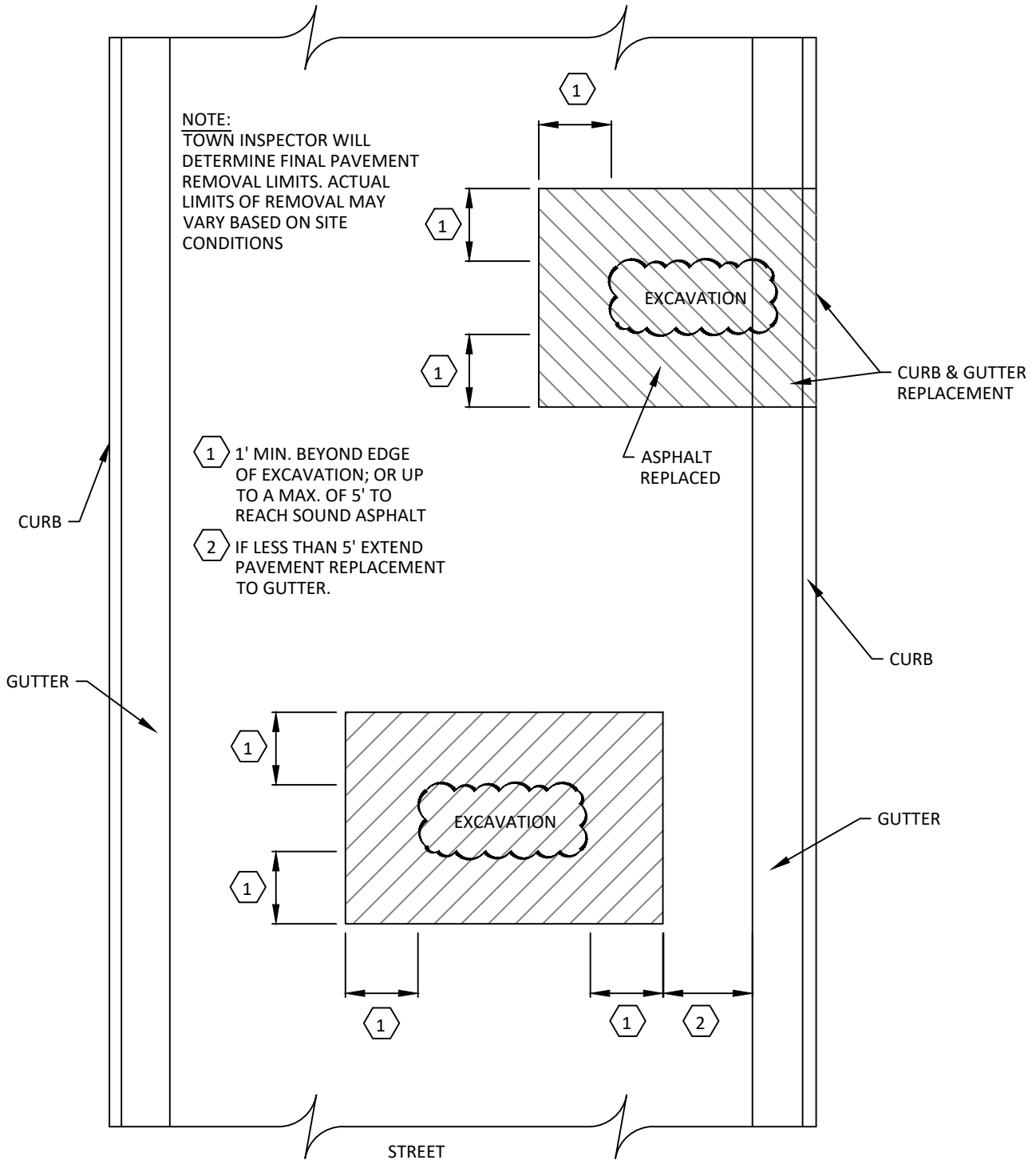


NOTES:

1. CONTRACTOR SHALL COMPLY WITH ISSUED RIGHT OF WAY WORK PERMIT-FRANCHISE CONDITIONS.
2. ALL DISTURBED AREAS SHALL BE SODDED (UNLESS OTHERWISE APPROVED).
 - 2.1. BACKFILL AND EMBEDMENT PARTICLE SIZE SHALL NOT EXCEED 3" IN ANY DIRECTION.
 - 2.2. MATCH EXISTING SOD TYPE (COORDINATE WITH PARKS DEPT).
 - 2.3. SOD IRRIGATION IS THE RESPONSIBILITY OF THE CONTRACTOR UNTIL ESTABLISHMENT.
 - 2.4. RESTORE SOD TO AS GOOD OR BETTER THAN ORIGINAL CONDITION.
 - 2.5. FAILURE TO COMPLY MAY RESULT IN SUSPENSION OF ALL PERMITS.



NOTE:
TOWN INSPECTOR WILL DETERMINE FINAL PAVEMENT REMOVAL LIMITS. ACTUAL LIMITS OF REMOVAL MAY VARY BASED ON SITE CONDITIONS



- ① 1' MIN. BEYOND EDGE OF EXCAVATION; OR UP TO A MAX. OF 5' TO REACH SOUND ASPHALT
- ② IF LESS THAN 5' EXTEND PAVEMENT REPLACEMENT TO GUTTER.